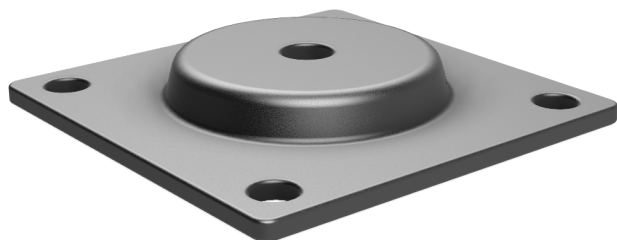
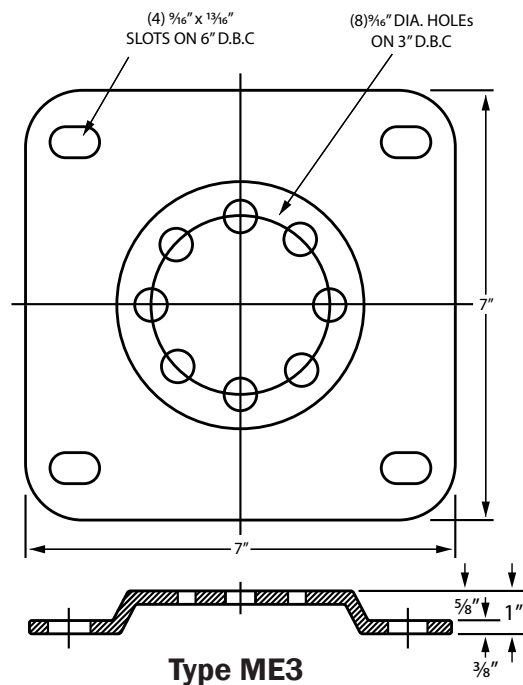
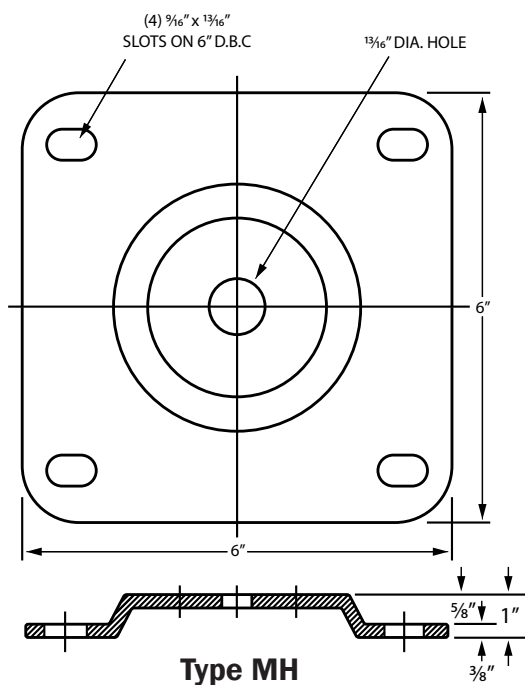


Bus Support Fittings + Hardware

Type M Flat Mount - 4 Hole



The type "M" base has been designed to provide a strong, secure mounting to any flat surface. Its application is with high strength insulators and bus assemblies, or wherever the use of a four bolt base is mandatory. Four slotted holes allow for slight field adjustment between base and mounting structure bolts. Standard base height is 1". Type "ME3" can also be used with outdoor style 3" DBC



"MH" For Use With Class A-20 Insulator Center Bolt		"ME3" For Use With Class A-30/B-30 Insulator 3" Bolt Circle Mounting	
Height "H"	Catalog Number	Height "H"	Catalog Number
1	331953	1	331973

For cross reference or other
information, please contact us.
deltastarcc.com



**DELTA STAR
CONNECTOR COMPANY**

